

```
1 <HTML>
2
3 <!-- Fig. 3.1: main.html -->
4 <!-- Our first Web page -->
5
6 <HEAD>
7 <TITLE>Internet and WWW How to Program - Welcome</TITLE>
8 </HEAD>
9
10 <BODY>
11
12 <P>Welcome to Our Web Site!</P>
13
14 </BODY>
15 </HTML>
```

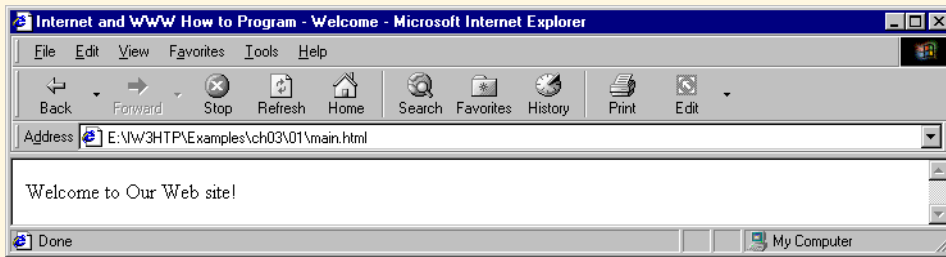


Fig. 3.1 Basic HTML file.

```
1 <HTML>
2
3 <!-- Fig. 3.2: header.html -->
4 <!-- HTML headers -->
5
6 <HEAD>
7 <TITLE>Internet and WWW How to Program - Headers</TITLE>
8 </HEAD>
9
10 <BODY>
11
12 <!-- Centers everything in the CENTER element -->
13 <CENTER>
14 <H1>Level 1 Header</H1> <!-- Level 1 header -->
15 <H2>Level 2 header</H2> <!-- Level 2 header -->
16 <H3>Level 3 header</H3> <!-- Level 3 header -->
17 <H4>Level 4 header</H4> <!-- Level 4 header -->
18 <H5>Level 5 header</H5> <!-- Level 5 header -->
19 <H6>Level 6 header</H6> <!-- Level 6 header -->
20 </CENTER>
21
22 </BODY>
23 </HTML>
```



Fig. 3.2 Header elements **H1** through **H6** .

```
1 <HTML>
2
3 <!-- Fig. 3.3: main.html -->
4 <!-- Stylizing your text -->
5
6 <HEAD>
7 <TITLE>Internet and WWW How to Program - Welcome</TITLE>
8 </HEAD>
9
10 <BODY>
11 <H1 ALIGN = "center"><U>Welcome to Our Web Site!</U></H1>
12
13 <P>We have designed this site to teach
14 about the wonders of <EM>HTML</EM>. We have been using
15 <EM>HTML</EM> since <U>version<STRONG> 2.0</STRONG></U>,
16 and we enjoy the features that have been added recently. It
17 seems only a short time ago that we read our first <EM>HTML</EM>
18 book. Soon you will know about many of the great new features
19 of HTML 4.0.</P>
20
21 <H2 ALIGN = "center">Have Fun With the Site!</H2>
22
23 </BODY>
24 </HTML>
```

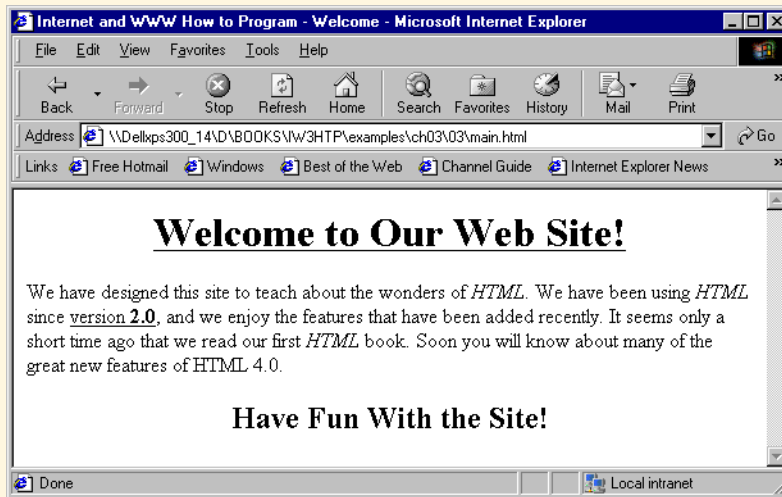


Fig. 3.3 Stylizing text on Web pages .

```
 1 <HTML>
 2
 3 <!-- Fig. 3.4: links.html -->
 4 <!-- Introduction to hyperlinks -->
 5
 6 <HEAD>
 7 <TITLE>Internet and WWW How to Program - Links</TITLE>
 8 </HEAD>
 9
10 <BODY>
11
12 <CENTER>
13 <H2>Here are my favorite Internet Search Engines</H2>
14 <P><STRONG>Click on the Search Engine address to go to that
15 page.</STRONG></P>
16
17 <!-- Hyperlink form: <A HREF = "address"> -->
18 <P>Yahoo: <A HREF = "http://www.yahoo.com">
19 http://www.yahoo.com</A></P>
20
21 <P>AltaVista: <A HREF = "http://www.altavista.com">
22 http://www.altavista.com</A></P>
23
24 <P>Ask Jeeves: <A HREF = "http://www.askjeeves.com">
25 http://www.askjeeves.com</A></P>
26
27 <P>WebCrawler: <A HREF = "http://www.webcrawler.com">
28 http://www.webcrawler.com</A></P>
29 </CENTER>
30
31 </BODY>
32 </HTML>
```

Fig. 3.4 Linking to other Web pages (part 1 of 2).

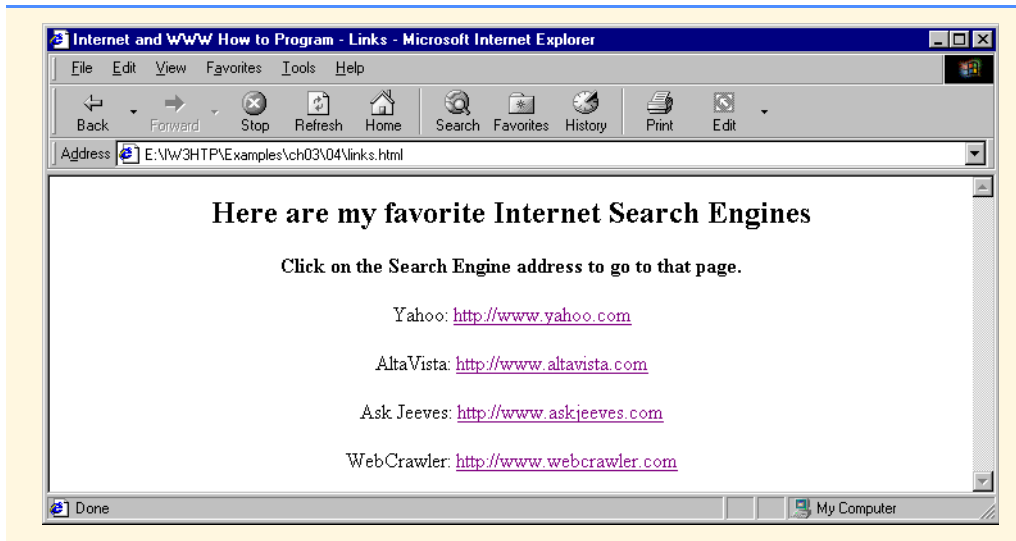


Fig. 3.4 Linking to other Web pages (part 2 of 2).

```
1 <HTML>
2
3 <!-- Fig. 3.5: contact.html -->
4 <!-- Adding email hyperlinks -->
5
6 <HEAD>
7 <TITLE>Internet and WWW How to Program - Contact Page</TITLE>
8 </HEAD>
9
10 <BODY>
11
12 <!-- The correct form for hyperlinking to an email address -->
13 <!-- is <A HREF = "mailto:address"></A> -->
14 <P>My email address is <A HREF = "mailto:deitel@deitel.com">
15 deitel@deitel.com</A>. Click on the address and your browser
16 will open an email message and address it to me.
17 </P>
18
19 </BODY>
20 </HTML>
```

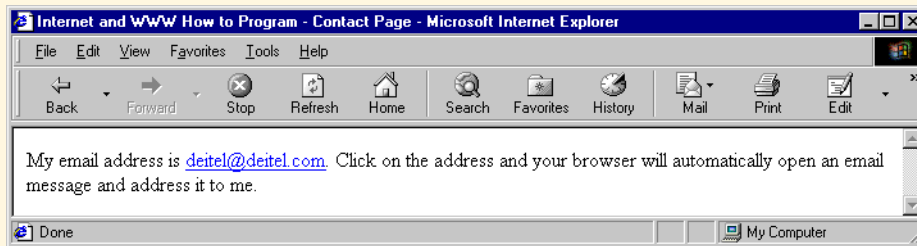


Fig. 3.5 Linking to an email address .

```
1 <HTML>
2
3 <!-- Fig. 3.6: picture.html -->
4 <!-- Adding images with HTML -->
5
6 <HEAD>
7 <TITLE>Internet and WWW How to Program - Welcome</TITLE>
8 </HEAD>
9
10 <BODY BACKGROUND = "bckgrnd.gif">
11
12 <CENTER>
13 <!-- Format for entering images: <IMG SRC = "name"> -->
14 <IMG SRC = "deitel.gif" BORDER = "1" HEIGHT = "144"
15     WIDTH = "200" ALT = "Harvey and Paul Deitel">
16 </CENTER>
17
18 </BODY>
19 </HTML>
```



Fig. 3.6 Placing images in HTML files .

```
1 <HTML>
2
3 <!-- Fig. 3.7: navigationbar.html -->
4 <!-- Using images as link anchors -->
5
6 <HEAD>
7 <TITLE>Internet and WWW How to Program - Nav Bar</TITLE>
8 </HEAD>
9
10 <BODY BGCOLOR = "#CDCDCD">
11 <CENTER>
12
13 <A HREF = "main.html">
14 <IMG SRC = "buttons/about.jpg" WIDTH = "65" HEIGHT = "50"
15     BORDER = "0" ALT = "Main Page"></A><BR>
16
17 <A HREF = "links.html">
18 <IMG SRC = "buttons/links.jpg" WIDTH = "65" HEIGHT = "50"
19     BORDER = "0" ALT = "Links Page"></A><BR>
20
21 <A HREF = "list.html">
22 <IMG SRC = "buttons/list.jpg" WIDTH = "65" HEIGHT = "50"
23     BORDER = "0" ALT = "List Example Page"></A><BR>
24
25 <A HREF = "contact.html">
26 <IMG SRC = "buttons/contact.jpg" WIDTH = "65" HEIGHT = "50"
27     BORDER = "0" ALT = "Contact Page"></A><BR>
28
29 <A HREF = "header.html">
30 <IMG SRC = "buttons/header.jpg" WIDTH = "65" HEIGHT = "50"
31     BORDER = "0" ALT = "Header Page"></A><BR>
32
33 <A HREF = "table.html">
34 <IMG SRC = "buttons/table.jpg" WIDTH = "65" HEIGHT = "50"
35     BORDER = "0" ALT = "Table Page"></A><BR>
36
37 <A HREF = "form.html">
38 <IMG SRC = "buttons/form.jpg" WIDTH = "65" HEIGHT = "50"
39     BORDER = "0" ALT = "Feedback Form"></A><BR>
40 </CENTER>
41
42 </BODY>
43 </HTML>
```

Fig. 3.7 Using images as link anchors (part 1 of 2).

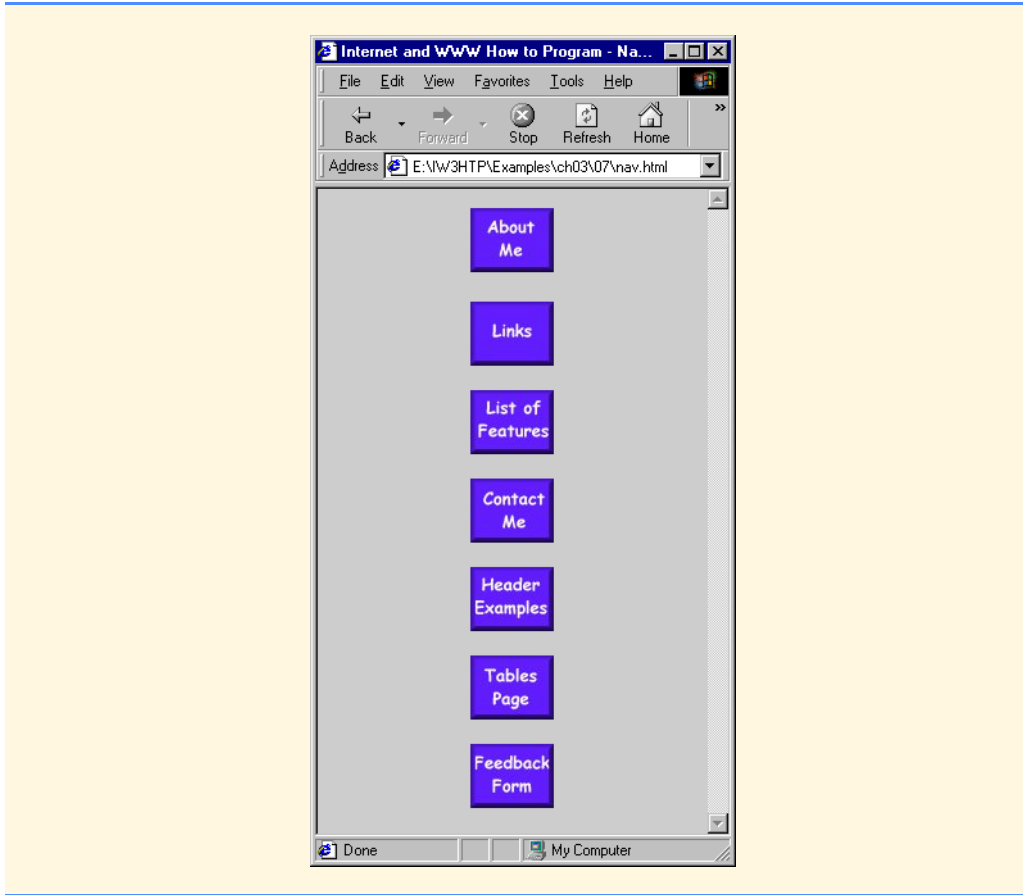


Fig. 3.7 Using images as link anchors (part 2 of 2).

```
1 <HTML>
2
3 <!-- Fig. 3.8: main.html -->
4 <!-- Formatting text size and color -->
5
6 <HEAD>
7 <TITLE>Internet and WWW How to Program - Welcome</TITLE>
8 </HEAD>
9
10 <BODY>
11
12 <H1 ALIGN = "center"><U>Welcome to Our Web Site!</U></H1>
13
14 <!-- Font tags change the formatting of text they enclose -->
15 <P><FONT COLOR = "red" SIZE = "+1" FACE = "Arial">We have
16 designed this site to teach about the wonders of
17 <EM>HTML</EM>.</FONT>
18
19 <FONT COLOR = "purple" SIZE = "+2" FACE = "Verdana">We have been
20 using <EM>HTML</EM> since <U>version<STRONG> 2.0</STRONG></U>,
21 and we enjoy the features that have been added recently.</FONT>
22
23 <FONT COLOR = "blue" SIZE = "+1" FACE = "Helvetica">It
24 seems only a short time ago that we read our first <EM>HTML</EM>
25 book.</FONT>
26
27 <FONT COLOR = "green" SIZE = "+2" FACE = "Times">Soon you will
28 know about many of the great new features of HTML 4.0.</FONT></P>
29
30 <H2 ALIGN = "center">Have Fun With the Site!</H2>
31
32 </BODY>
33 </HTML>
```

Fig. 3.8 Using the **FONT** element to format text (part 1 of 2).

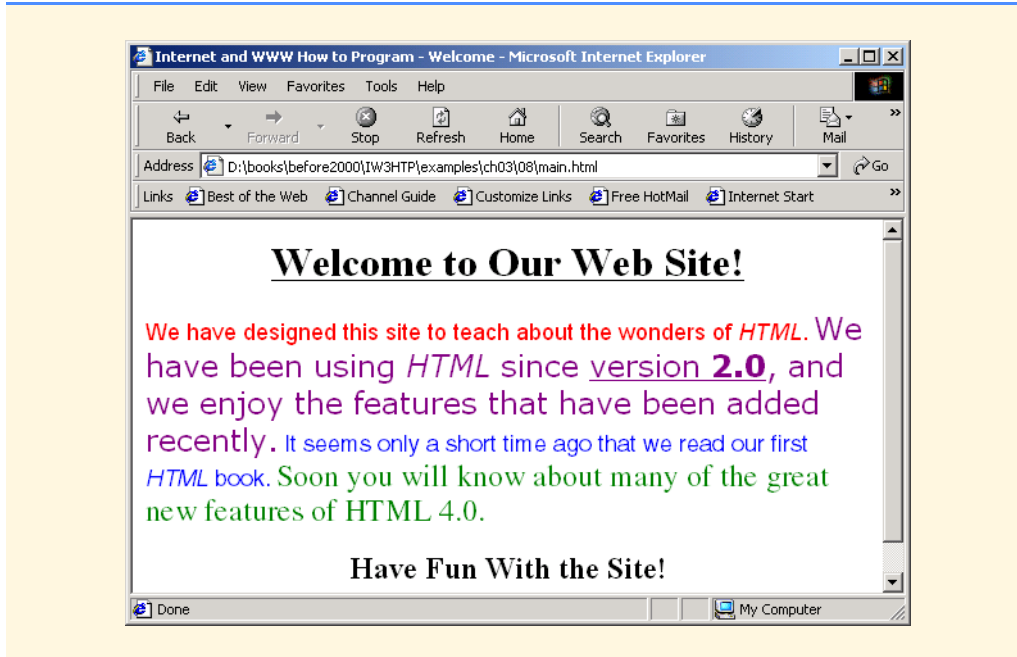


Fig. 3.8 Using the **FONT** element to format text (part 2 of 2).

```

1 <HTML>
2
3 <!-- Fig. 3.9: contact.html -->
4 <!-- Inserting special characters -->
5
6 <HEAD>
7 <TITLE>Internet and WWW How to Program - Contact Page</TITLE>
8 </HEAD>
9
10 <BODY>
11
12 <!-- Special characters are entered using the form &code; -->
13 <P>My email address is <A HREF = "mailto:deitel@deitel.com">
14 deitel@deitel.com</A>. Click on the address and your browser
15 will automatically open an email message and address it to my
16 address.</P>
17
18 <P>All information on this site is <STRONG>&copy;</STRONG>
19 Deitel <STRONG>&amp;</STRONG> Associates, 1999.</P>
20
21 <!-- Text can be struck out with a set of <DEL>...</DEL> -->
22 <!-- tags, it can be set in subscript with <SUB>...</SUB>, -->
23 <!-- and it can be set into superscript with <SUP>...</SUP> -->
24 <DEL><P>You may copy up to 3.14 x 10<SUP>2</SUP> characters
25 worth of information from this site.</DEL><BR> Just make sure
26 you <SUB>do not copy more information</SUB> than is allowable.
27
28 <P>No permission is needed if you only need to use <STRONG>
29 &lt; &frac14;</STRONG> of the information presented here.</P>
30
31 </BODY>
32 </HTML>

```

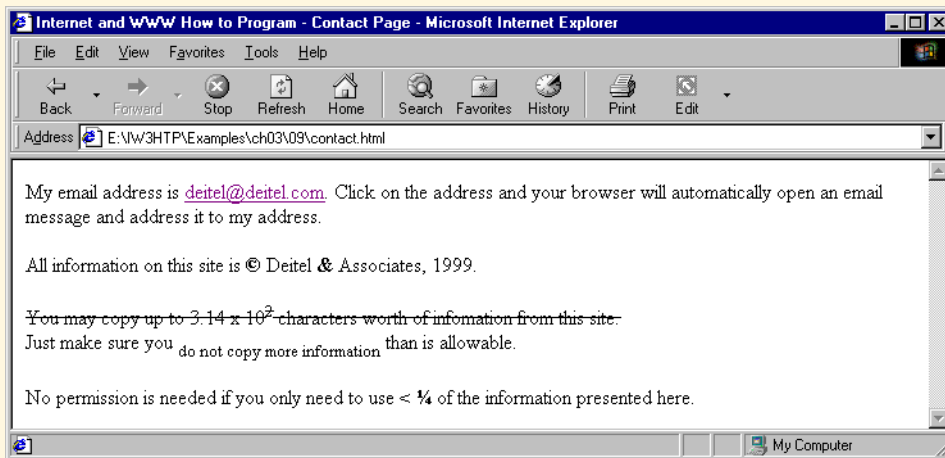


Fig. 3.9 Inserting special characters into HTML .

```
1 <HTML>
2
3 <!-- Fig. 3.10: header.html -->
4 <!-- Line breaks and horizontal rules -->
5
6 <HEAD>
7 <TITLE>Internet and WWW How to Program - Horizontal Rule</TITLE>
8 </HEAD>
9
10 <BODY>
11 <!-- Horizontal rules as inserted using the format: -->
12 <!-- <HR WIDTH = ".." SIZE = ".." ALIGN = ".." --> -->
13 <HR WIDTH = "25%" SIZE = 1>
14 <HR WIDTH = "25%" SIZE = 2>
15 <HR WIDTH = "25%" SIZE = 3>
16
17 <P ALIGN = "left"><STRONG>Size:</STRONG>4
18 <STRONG>Width:</STRONG>75%
19 <HR WIDTH = "75%" SIZE = "4" ALIGN = "left">
20
21 <P ALIGN = "right"><STRONG>Size:</STRONG>12
22 <STRONG>Width:</STRONG>25%
23 <HR WIDTH = "25%" SIZE = "12" ALIGN = "right">
24
25 <P ALIGN = "center"><STRONG>Size:</STRONG>8
26 <STRONG>Width:</STRONG>50%
27 <STRONG><EM>No shade...</EM></STRONG>
28 <HR NOSHADE WIDTH = "50%" SIZE = "8" ALIGN = "center">
29
30 </BODY>
31 </HTML>
```

Fig. 3.10 Using horizontal rules (part 1 of 2).

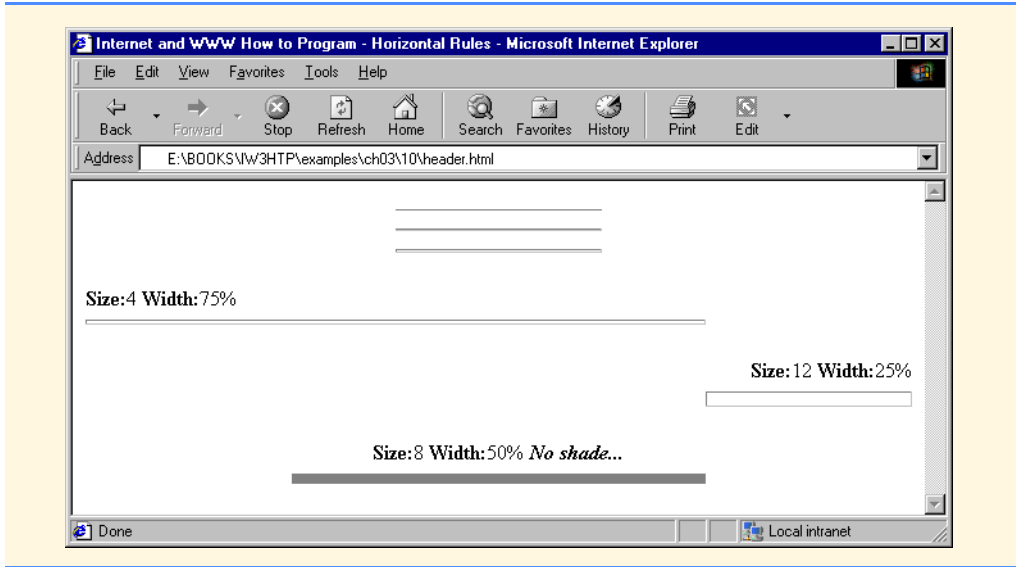


Fig. 3.10 Using horizontal rules (part 2 of 2).