

```
1 <HTML>
2
3 <!-- Fig. 4.1: links.html -->
4 <!-- Unordered Lists -->
5
6 <HEAD>
7 <TITLE>Internet and WWW How to Program - Links</TITLE>
8 </HEAD>
9
10 <BODY>
11
12 <CENTER>
13 <H2>Here are my favorite Internet Search Engines</H2>
14 <P><STRONG>Click on the Search Engine address to go to that
15 page.</STRONG></P>
16
17 <!-- <UL> creates a new unordered (bullet) list -->
18 <!-- <LI> inserts a new entry into the list -->
19 <UL>
20 <LI>Yahoo: <A HREF = "http://www.yahoo.com">
21 http://www.yahoo.com</A></LI>
22
23 <LI>Alta Vista: <A HREF = "http://www.altavista.com">
24 http://www.altavista.com</A></LI>
25
26 <LI>Ask Jeeves: <A HREF = "http://www.askjeeves.com">
27 http://www.askjeeves.com</A></LI>
28
29 <LI>WebCrawler: <A HREF = "http://www.webcrawler.com">
30 http://www.webcrawler.com</A></LI>
31 </UL>
32 </CENTER>
33
34 </BODY>
35 </HTML>
```

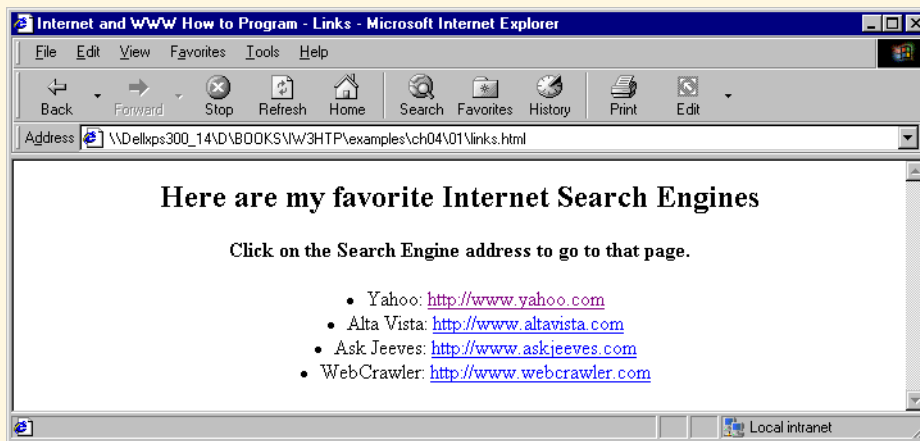


Fig. 4.1 Unordered lists with HTML.

© Copyright 2000 by Prentice Hall. All Rights Reserved.

For use only by instructors in classes for which *Java How to Program, Third Edition* is the required textbook.

```

1  <HTML>
2
3  <!-- Fig. 4.2: list.html -->
4  <!-- Advanced Lists: nested and ordered -->
5
6  <HEAD>
7  <TITLE>Internet and WWW How to Program - List</TITLE>
8  </HEAD>
9
10 <BODY>
11
12 <CENTER>
13 <H2><U>The Best Features of the Internet</U></H2>
14 </CENTER>
15
16 <UL>
17 <LI>You can meet new people from countries around
18   the world.</LI>
19 <LI>You have access to new media as it becomes public:</LI>
20
21   <!-- This starts a nested list, which uses a modified -->
22   <!-- bullet. The list ends when you close the <UL> tag -->
23   <UL>
24     <LI>New games</LI>
25     <LI>New applications </LI>
26
27     <!-- Another nested list, there is no nesting limit -->
28     <UL>
29       <LI>For business</LI>
30       <LI>For pleasure</LI>
31     </UL> <!-- This ends the double nested list -->
32     <LI>Around the clock news</LI>
33     <LI>Search engines</LI>
34     <LI>Shopping</LI>
35     <LI>Programming</LI>
36     <UL>
37       <LI>HTML</LI>
38       <LI>Java</LI>
39       <LI>Dynamic HTML</LI>
40       <LI>Scripts</LI>
41       <LI>New languages</LI>
42     </UL>
43   </UL> <!-- This ends the first level nested list -->
44 <LI>Links</LI>
45 <LI>Keeping in touch with old friends</LI>
46 <LI>It is the technology of the future!</LI>
47 </UL> <!-- This ends the primary unordered list -->
48
49 <BR><CENTER><H2>My 3 Favorite <EM>CEO's</EM></H2></CENTER>
50
51 <!-- Ordered lists are constructed in the same way as -->
52 <!-- unordered lists, except their starting tag is <OL> -->
53 <OL>

```

Fig. 4.2 Nested and ordered lists in HTML (part 1 of 2).

```
54 <LI>Bill Gates</LI>
55 <LI>Steve Jobs</LI>
56 <LI>Michael Dell</LI>
57 </OL>
58
59 </BODY>
60 </HTML>
```

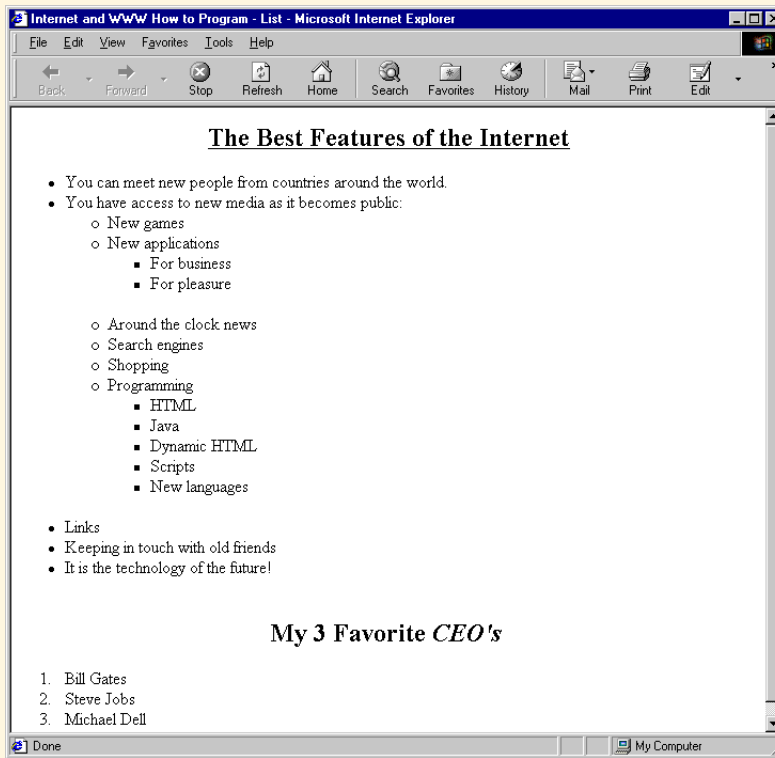


Fig. 4.2 Nested and ordered lists in HTML (part 2 of 2).

```
1 <HTML>
2
3 <!-- Fig. 4.3: list.html -->
4 <!-- Different Types of Ordered Lists -->
5
6 <HEAD>
7 <TITLE>Internet and WWW How to Program - List</TITLE>
8 </HEAD>
9
10 <BODY>
11
12 <CENTER>
13 <H2>Web Site Outline</H2>
14 </CENTER>
15
16 <!-- Change the character style by specifying it in -->
17 <!-- <OL TYPE = "style"> OR <LI TYPE = "style"> as -->
18 <!-- decimal=1, uppercase Roman=I, lowercase Roman=i -->
19 <!-- uppercase Latin=A, lowercase Latin=a -->
20 <OL>
21 <LI>Home page</LI>
22 <LI>Links page</LI>
23   <OL TYPE = "I">
24     <LI>Links to search engines</LI>
25     <LI>Links to information sites</LI>
26     <OL TYPE = "A">
27       <LI>News sites</LI>
28       <OL>
29         <LI TYPE = "i">TV based</LI>
30         <OL TYPE = "a">
31           <LI>CNN</LI>
32           <LI>Headline News</LI>
33         </OL>
34         <LI TYPE = "i">Text based</LI>
35         <OL TYPE = "a">
36           <LI>New York Times</LI>
37           <LI>Washington Post</LI>
38         </OL>
39       </OL>
40     <LI>Stock sites</LI>
41   </OL>
42   <LI>Links to "fun" sites</LI>
43 </OL>
44 <LI>Feedback page</LI>
45 <LI>Contact page</LI>
46 <LI>HTML Example Pages</LI>
47 </OL>
48
49 </BODY>
50 </HTML>
```

Fig. 4.3 Different types of ordered lists (part 1 of 2).

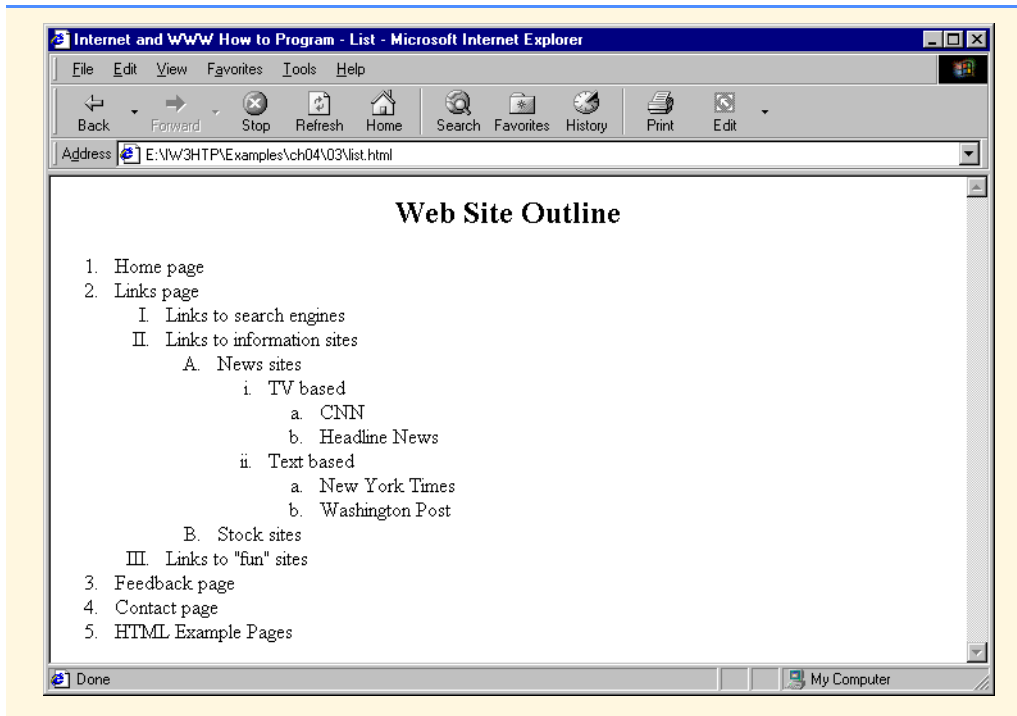


Fig. 4.3 Different types of ordered lists (part 2 of 2).

```
1 <HTML>
2
3 <!-- Fig. 4.4: table.html -->
4 <!-- Basic table design -->
5
6 <HEAD>
7 <TITLE>Internet and WWW How to Program - Tables</TITLE>
8 </HEAD>
9
10 <BODY>
11
12 <CENTER><H2>Table Example Page</H2></CENTER>
13
14 <!-- The <TABLE> tag opens a new table and lets you put in -->
15 <!-- design options and instructions -->
16 <TABLE BORDER = "1" ALIGN = "center" WIDTH = "40%">
17
18 <!-- Use the <CAPTION> tag to summarize the table's contents -->
19 <!-- (this helps the visually impaired) -->
20 <CAPTION>Here is a small sample table.</CAPTION>
21
22 <!-- The <THEAD> is the first (non-scrolling) horizontal -->
23 <!-- section. Use it to format the table header area. -->
24 <!-- <TH> inserts a header cell and displays bold text -->
25 <THEAD>
26 <TR><TH>This is the head.</TH></TR>
27 </THEAD>
28
29 <!-- All of your important content goes in the <TBODY>. -->
30 <!-- Use this tag to format the entire section -->
31 <!-- <TD> inserts a data cell, with regular text -->
32 <TBODY>
33 <TR><TD ALIGN = "center">This is the body.</TD></TR>
34 </TBODY>
35
36 </TABLE>
37
38 </BODY>
39 </HTML>
```

Fig. 4.4 HTML table (part 1 of 2).

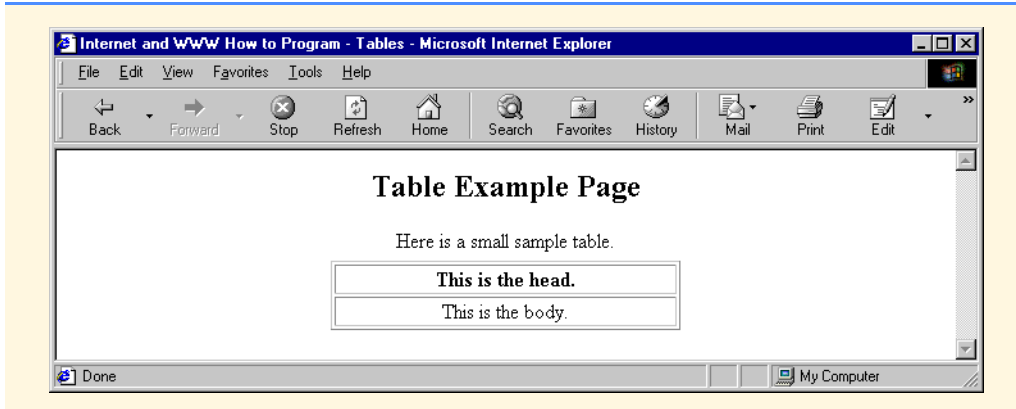


Fig. 4.4 HTML table (part 2 of 2).

```

1 <HTML>
2
3 <!-- Fig. 4.5: table.html -->
4 <!-- Intermediate table design -->
5
6 <HEAD>
7 <TITLE>Internet and WWW How to Program - Tables</TITLE>
8 </HEAD>
9 <BODY>
10
11 <H2 ALIGN = "center">Table Example Page</H2>
12
13 <TABLE BORDER = "1" ALIGN = "center" WIDTH = "40%">
14   <CAPTION>Here is a small sample table.</CAPTION>
15
16   <THEAD>
17   <TR>
18     <TH>This is the Head.</TH>
19   </TR>
20 </THEAD>
21
22   <TBODY>
23   <TR>
24     <TD ALIGN = "center">This is the Body.</TD>
25   </TR>
26 </TBODY>
27
28 </TABLE>
29
30 <BR><BR>
31
32 <TABLE BORDER = "1" ALIGN = "center">
33
34   <CAPTION>Here is a more complex sample table.</CAPTION>
35
36   <!-- <COLGROUP> and <COL> are used to format entire -->
37   <!-- columns at once. SPAN determines how many columns -->
38   <!-- the COL tag effects. -->
39   <COLGROUP>
40     <COL ALIGN = "right">
41     <COL SPAN = "4" ALIGN = "center">
42   </COLGROUP>
43
44   <THEAD>
45
46   <!-- ROWSPANS and COLSPANS combine the indicated number -->
47   <!-- of cells vertically or horizontally -->
48   <TR BGCOLOR = "#8888FF">
49     <TH ROWSPAN = "2">
50       <IMG SRC = "deitel.gif" WIDTH = "200" HEIGHT = "144"
51         ALT = "Harvey and Paul Deitel">
52     </TH>
53     <TH COLSPAN = "4" VALIGN = "top">

```

Fig. 4.5 A complex table with formatting and color.


```
54     <H1>Camelid comparison</H1><BR>
55     <P>Approximate as of 8/99</P>
56     </TH>
57 </TR>
58
59 <TR BGCOLOR = "khaki" VALIGN = "bottom">
60     <TH># of Humps</TH>
61     <TH>Indigenous region</TH>
62     <TH>Spits?</TH>
63     <TH>Produces Wool?</TH>
64 </TR>
65
66 </THEAD>
67
68 <TBODY>
69
70 <TR>
71     <TH>Camels (bactrian)</TH>
72     <TD>2</TD>
73     <TD>Africa/Asia</TD>
74     <TD ROWSPAN = "2">Llama</TD>
75     <TD ROWSPAN = "2">Llama</TD>
76 </TR>
77
78 <TR>
79     <TH>Llamas</TH>
80     <TD>1</TD>
81     <TD>Andes Mountains</TD>
82 </TR>
83
84 </TBODY>
85 </TABLE>
86
87 </BODY>
88 </HTML>
```

Fig. 4.5 A complex table with formatting and color.

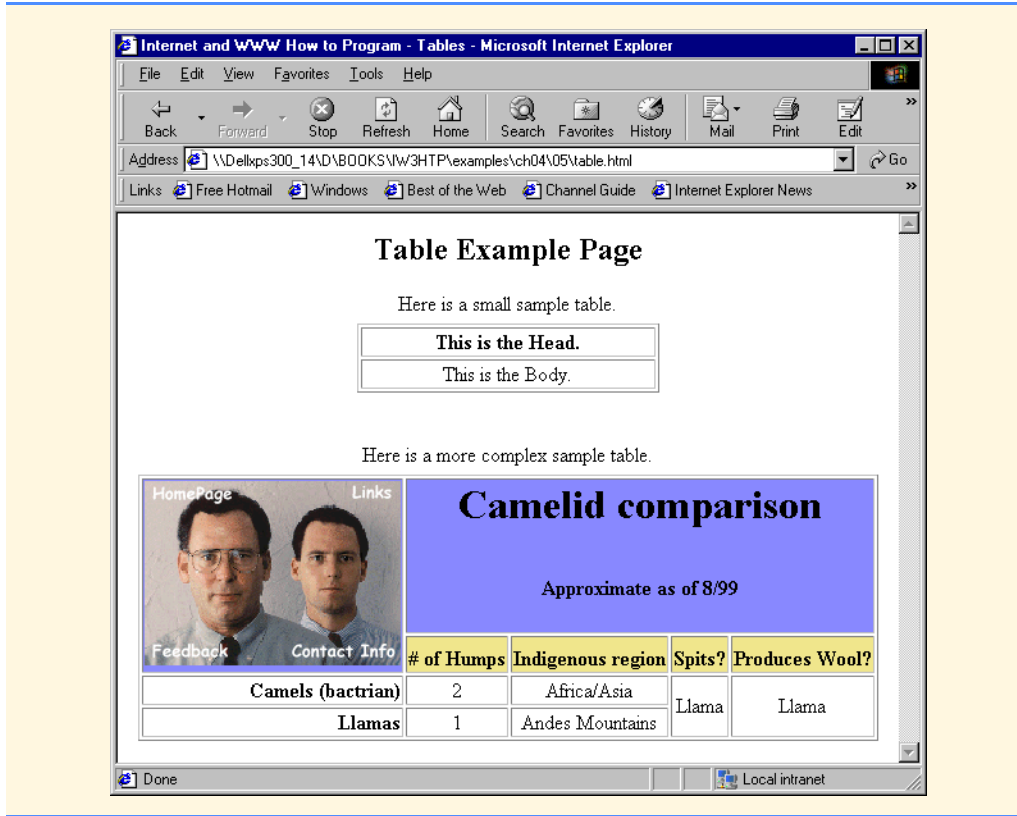


Fig. 4.5 A complex table with formatting and color.

```
1 <HTML>
2
3 <!-- Fig. 4.6: form.html -->
4 <!-- Introducing Form Design -->
5
6 <HEAD>
7 <TITLE>Internet and WWW How to Program - Forms</TITLE>
8 </HEAD>
9
10 <BODY>
11 <H2>Feedback Form</H2>
12
13 <P>Please fill out this form to help us improve our site.</P>
14
15 <!-- This tag starts the form, gives the method of sending -->
16 <!-- information and the location of form scripts. -->
17 <!-- Hidden inputs give the server non-visual information -->
18 <FORM METHOD = "POST" ACTION = "/cgi-bin/formmail">
19
20 <INPUT TYPE = "hidden" NAME = "recipient"
21     VALUE = "deitel@deitel.com">
22 <INPUT TYPE = "hidden" NAME = "subject"
23     VALUE = "Feedback Form">
24 <INPUT TYPE = "hidden" NAME = "redirect"
25     VALUE = "main.html">
26
27 <!-- <INPUT type = "text"> inserts a text box -->
28 <P><STRONG>Name:</STRONG>
29 <INPUT NAME = "name" TYPE = "text" SIZE = "25"></P>
30
31 <!-- Input types "submit" and "reset" insert buttons -->
32 <!-- for submitting or clearing the form's contents -->
33 <INPUT TYPE = "submit" VALUE = "Submit Your Entries">
34 <INPUT TYPE = "reset" VALUE = "Clear Your Entries">
35 </FORM>
36
37 </BODY>
38 </HTML>
```

Fig. 4.6 Simple form with basic fields and a text box (part 1 of 2).

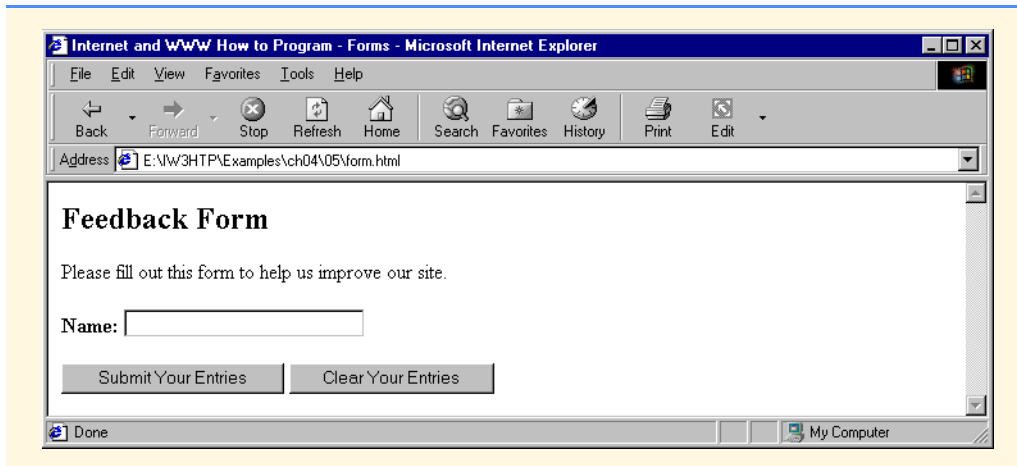


Fig. 4.6 Simple form with basic fields and a text box (part 2 of 2).

```

1 <HTML>
2
3 <!-- Fig. 4.7: form.html -->
4 <!-- Form Design Example 2 -->
5
6 <HEAD>
7 <TITLE>Internet and WWW How to Program - Forms</TITLE>
8 </HEAD>
9
10 <BODY>
11 <H2>Feedback Form</H2>
12
13 <P>Please fill out this form to help us improve our site.</P>
14
15 <FORM METHOD = "POST" ACTION = "/cgi-bin/formmail">
16
17 <INPUT TYPE = "hidden" NAME = "recipient"
18     VALUE = "deitel@deitel.com">
19 <INPUT TYPE = "hidden" NAME = "subject"
20     VALUE = "Feedback Form">
21 <INPUT TYPE = "hidden" NAME = "redirect"
22     VALUE = "main.html">
23
24 <P><STRONG>Name: </STRONG>
25 <INPUT NAME = "name" TYPE = "text" SIZE = "25"></P>
26
27 <!-- <TEXTAREA> creates a textbox of the size given -->
28 <P><STRONG>Comments:</STRONG>
29 <TEXTAREA NAME = "comments" ROWS = "4" COLS = "36"></TEXTAREA>
30 </P>
31
32 <!-- <INPUT TYPE = "password"> inserts a textbox whose -->
33 <!-- readout will be in *** instead of regular characters -->
34 <P><STRONG>Email Address:</STRONG>
35 <INPUT NAME = "email" TYPE = "password" SIZE = "25"></P>
36
37 <!-- <INPUT TYPE = "checkbox"> creates a checkbox -->
38 <P><STRONG>Things you liked:</STRONG><BR>
39
40 Site design
41 <INPUT NAME = "things" TYPE = "checkbox" VALUE = "Design">
42 Links
43 <INPUT NAME = "things" TYPE = "checkbox" VALUE = "Links">
44 Ease of use
45 <INPUT NAME = "things" TYPE = "checkbox" VALUE = "Ease">
46 Images
47 <INPUT NAME = "things" TYPE = "checkbox" VALUE = "Images">
48 Source code
49 <INPUT NAME = "things" TYPE = "checkbox" VALUE = "Code">
50 </P>
51
52 <INPUT TYPE = "submit" VALUE = "Submit Your Entries">
53 <INPUT TYPE = "reset" VALUE = "Clear Your Entries">

```

Fig. 4.7 Form including textareas, password boxes and checkboxes (part 1 of 2).

```
54 </FORM>
55
56 </BODY>
57 </HTML>
```

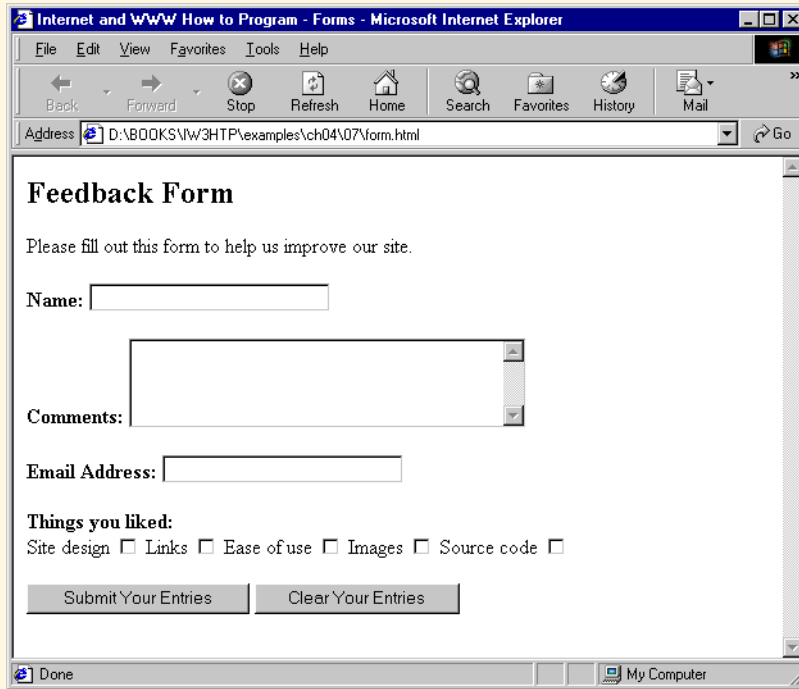


Fig. 4.7 Form including textareas, password boxes and checkboxes (part 2 of 2).

```

1 <HTML>
2
3 <!-- Fig. 4.8: form.html -->
4 <!-- Form Design Example 3 -->
5
6 <HEAD>
7 <TITLE>Internet and WWW How to Program - Forms</TITLE>
8 </HEAD>
9
10 <BODY>
11 <H2>Feedback Form</H2>
12
13 <P>Please fill out this form to help us improve our site.</P>
14
15 <FORM METHOD = "POST" ACTION = "/cgi-bin/formmail">
16
17 <INPUT TYPE = "hidden" NAME = "recipient"
18     VALUE = "deitel@deitel.com">
19 <INPUT TYPE = "hidden" NAME = "subject"
20     VALUE = "Feedback Form">
21 <INPUT TYPE = "hidden" NAME = "redirect"
22     VALUE = "main.html">
23
24 <P><STRONG>Name: </STRONG>
25 <INPUT NAME = "name" TYPE = "text" SIZE = "25"></P>
26
27 <P><STRONG>Comments:</STRONG>
28 <TEXTAREA NAME = "comments" ROWS = "4" COLS = "36"></TEXTAREA>
29 </P>
30
31 <P><STRONG>Email Address:</STRONG>
32 <INPUT NAME = "email" TYPE = "password" SIZE = "25"></P>
33
34 <P><STRONG>Things you liked:</STRONG><BR>
35
36 Site design
37 <INPUT NAME = "things" TYPE = "checkbox" VALUE = "Design">
38 Links
39 <INPUT NAME = "things" TYPE = "checkbox" VALUE = "Links">
40 Ease of use
41 <INPUT NAME = "things" TYPE = "checkbox" VALUE = "Ease">
42 Images
43 <INPUT NAME = "things" TYPE = "checkbox" VALUE = "Images">
44 Source code
45 <INPUT NAME = "things" TYPE = "checkbox" VALUE = "Code">
46 </P>
47
48 <!-- <INPUT TYPE="radio"> creates a radio button. The -->
49 <!-- difference between radio buttons and checkboxes is -->
50 <!-- that only one radio button in a group can be selected -->
51 <P><STRONG>How did you get to our site?:</STRONG><BR>
52
53 Search engine

```

Fig. 4.8 HTML form including radio buttons and pulldown lists.

```
54 <INPUT NAME = "how get to site" TYPE = "radio"
55     VALUE = "search engine" CHECKED>
56 Links from another site
57 <INPUT NAME = "how get to site" TYPE = "radio"
58     VALUE = "link">
59 Deitel.com Web site
60 <INPUT NAME = "how get to site" TYPE = "radio"
61     VALUE = "deitel.com">
62 Reference in a book
63 <INPUT NAME = "how get to site" TYPE = "radio"
64     VALUE = "book">
65 Other
66 <INPUT NAME = "how get to site" TYPE = "radio"
67     VALUE = "other">
68 </P>
69
70 <!-- The <select> tag presents a drop down menu with -->
71 <!-- choices indicated by the <option> tags -->
72 <P><STRONG>Rate our site (1-10):</STRONG>
73 <SELECT NAME = "rating">
74 <OPTION SELECTED>Amazing:-)
75 <OPTION>10
76 <OPTION>9
77 <OPTION>8
78 <OPTION>7
79 <OPTION>6
80 <OPTION>5
81 <OPTION>4
82 <OPTION>3
83 <OPTION>2
84 <OPTION>1
85 <OPTION>The Pits:-(
86 </SELECT></P>
87
88 <INPUT TYPE = "submit" VALUE = "Submit Your Entries">
89 <INPUT TYPE = "reset" VALUE = "Clear Your Entries">
90 </FORM>
91
92 </BODY>
93 </HTML>
```

Fig. 4.8 HTML form including radio buttons and pulldown lists.

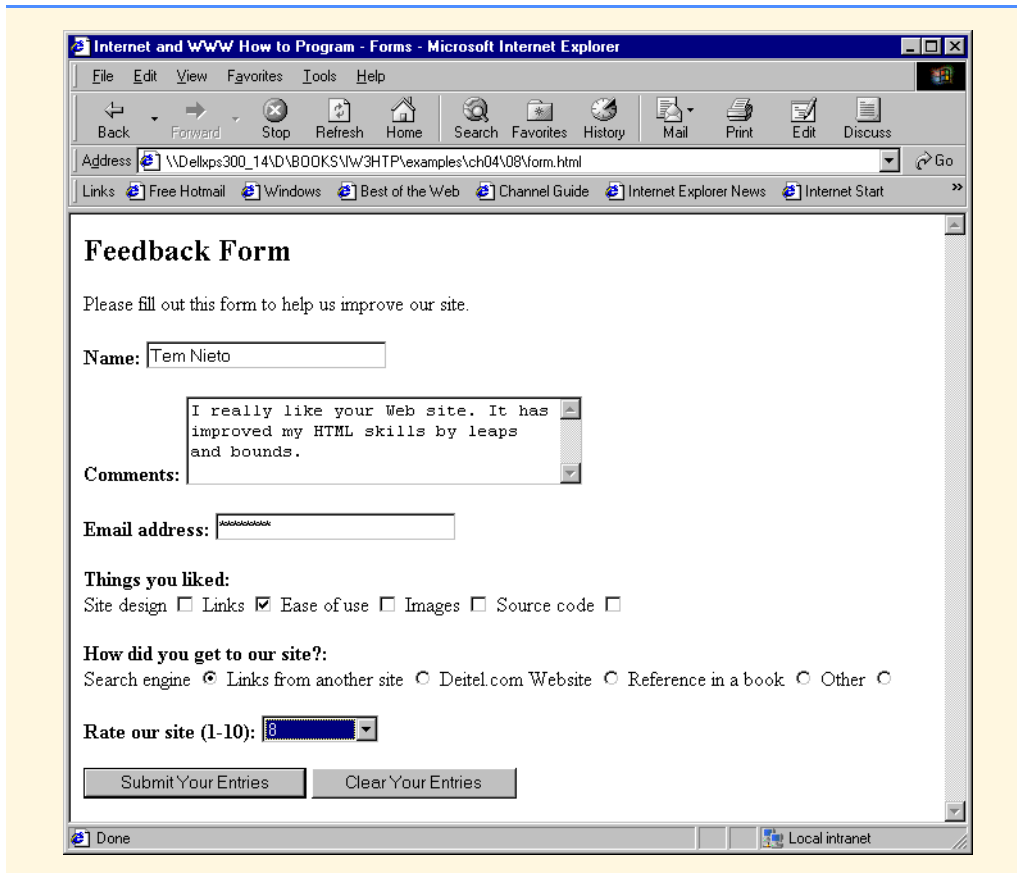


Fig. 4.8 HTML form including radio buttons and pulldown lists.

```

1  <HTML>
2
3  <!-- Fig. 4.9: list.html -->
4  <!-- Internal Linking -->
5
6  <HEAD>
7  <TITLE>Internet and WWW How to Program - List</TITLE>
8  </HEAD>
9
10 <BODY>
11
12 <CENTER>
13 <!-- <A NAME = "."></A> makes an internal hyperlink -->
14 <A NAME = "features"></A>
15 <H2><U>The Best Features of the Internet</U></H2>
16
17 <!-- An internal link's address is "xx.html#linkname" -->
18 <H3><A HREF = "#ceos">Go to <EM>Favorite CEO's</EM></A></H3>
19 </CENTER>
20
21 <UL>
22 <LI>You can meet new people from countries around the world.
23 <LI>You have access to new media as it becomes public:
24     <UL>
25         <LI>New games
26         <LI>New applications
27             <UL>
28                 <LI>For Business
29                 <LI>For Pleasure
30             </UL>
31         <LI>Around the Clock news
32         <LI>Search Engines
33         <LI>Shopping
34         <LI>Programming
35             <UL>
36                 <LI>HTML
37                 <LI>Java
38                 <LI>Dynamic HTML
39                 <LI>Scripts
40                 <LI>New languages
41             </UL>
42         </UL>
43     <LI>Links
44     <LI>Keeping In touch with old friends
45     <LI>It is the technology of the future!
46 </UL><BR><BR>
47
48 <A NAME = "ceos"></A>
49 <CENTER><H2>My 3 Favorite <EM>CEO's</EM></H2>
50 <H3><A HREF = "#features">Go to <EM>Favorite Features</EM></A>
51 </H3></CENTER>
52
53 <OL>

```

Fig. 4.9 Using internal hyperlinks to make your pages more navigable (part 1 of 2).

```
54 <LI>Bill Gates
55 <LI>Steve Jobs
56 <LI>Michael Dell
57 </OL>
58
59 </BODY>
60
61 </HTML>
```



Fig. 4.9 Using internal hyperlinks to make your pages more navigable (part 2 of 2).

```
1 <HTML>
2
3 <!-- Fig. 4.10: picture.html -->
4 <!-- Creating and Using Image Maps -->
5
6 <HEAD>
7 <TITLE>Internet and WWW How to Program - List</TITLE>
8 </HEAD>
9
10 <BODY BACKGROUND = "bckgrnd.gif">
11
12 <CENTER>
13 <!-- <MAP> opens and names an image map formatting area -->
14 <!-- and to be referenced later -->
15 <MAP NAME = "picture">
16
17 <!-- The "SHAPE = rect" indicates a rectangular area, with -->
18 <!-- coordinates of the upper-left and lower-right corners -->
19 <AREA HREF = "form.html" SHAPE = "rect"
20     COORDS = "3, 122, 73, 143" ALT = "Go to the form">
21 <AREA HREF = "contact.html" SHAPE = "rect"
22     COORDS = "109, 123, 199, 142" ALT = "Go to the contact page">
23 <AREA HREF = "main.html" SHAPE = "rect"
24     COORDS = "1, 2, 72, 17" ALT = "Go to the homepage">
25 <AREA HREF = "links.html" SHAPE = "rect"
26     COORDS = "155, 0, 199, 18" ALT = "Go to the links page">
27
28 <!-- The "SHAPE = polygon" indicates an area of cusotmizable -->
29 <!-- shape, with the coordinates of every vertex listed -->
30 <AREA HREF = "mailto:deitel@deitel.com" SHAPE = "poly"
31     COORDS = "28, 22, 24, 68, 46, 114, 84, 111, 99, 56, 86, 13"
32     ALT = "Email the Deitels">
33
34 <!-- The "SHAPE = circle" indicates a circular area with -->
35 <!-- center and radius listed -->
36 <AREA HREF = "mailto:deitel@deitel.com" SHAPE = "circle"
37     COORDS = "146, 66, 42" ALT = "Email the Deitels">
38 </MAP>
39
40 <!-- <IMG SRC=... USEMAP = "#name"> says that the indicated -->
41 <!-- image map will be used with this image -->
42 <IMG SRC = "deitel.gif" WIDTH = "200" HEIGHT = "144" BORDER = "1"
43     ALT = "Harvey and Paul Deitel" USEMAP = "#picture">
44 </CENTER>
45
46 </BODY>
47 </HTML>
```

Fig. 4.10 A picture with links anchored to an image map (part 1 of 2).



Fig. 4.10 A picture with links anchored to an image map (part 2 of 2).

```
1 <!DOCTYPE HTML PUBLIC "-//W3C//DTD HTML 4.0 Transitional//EN">
2 <HTML>
3
4 <!-- Fig. 4.11: main.html -->
5 <!-- <META> and <!DOCTYPE> tags -->
6
7 <HEAD>
8 <!-- <META> tags give search engines information they need -->
9 <!-- to catalog your site -->
10 <META NAME = "keywords" CONTENT = "Webpage, design, HTML,
11     tutorial, personal, help, index, form, contact, feedback,
12     list, links, frame, deitel">
13
14 <META NAME = "description" CONTENT = "This Web site will help
15     you learn the basics of HTML and Webpage design through the
16     use of interactive examples and instruction.">
17
18 <TITLE>Internet and WWW How to Program - Welcome</TITLE>
19 </HEAD>
20
21 <BODY>
22
23 <H1 ALIGN = "center"><U>Welcome to Our Web Site!</U></H1>
24
25 <P><FONT COLOR = "red" SIZE = "+1" FACE = "Arial">We have
26     designed this site to teach about the wonders of
27     <EM>HTML</EM>.</FONT>
28
29 <FONT COLOR = "purple" SIZE = "+2" FACE = "Verdana">We have been
30     using <EM>HTML</EM> since <U>version<STRONG> 2.0</STRONG></U>,
31     and we enjoy the features that have been added recently.</FONT>
32
33 <FONT COLOR = "blue" SIZE = "+1" FACE = "Helvetica">It
34     seems only a short time ago that we read our first <EM>HTML</EM>
35     book.</FONT>
36
37 <FONT COLOR = "green" SIZE = "+2" FACE = "Times">Soon you will
38     know about many of the great new feature of HTML 4.0.</FONT></P>
39
40 <H2 ALIGN = "center">Have Fun With the Site!</H2></P>
41
42 </BODY>
43 </HTML>
```

Fig. 4.11 Using `<META>` and `<DOCTYPE>` .

```
1 <!DOCTYPE HTML PUBLIC "-//W3C//DTD HTML 4.0 Frameset//EN">
2 <HTML>
3
4 <!-- Fig. 4.12: index.html -->
5 <!-- HTML Frames I -->
6
7 <HEAD>
8 <META NAME = "keywords" CONTENT = "Webpage, design, HTML,
9   tutorial, personal, help, index, form, contact, feedback,
10  list, links, frame, deitel">
11
12 <META NAME = "description" CONTENT = "This Web site will help
13   you learn the basics of HTML and Webpage design through the
14   use of interactive examples and instruction.">
15
16 <TITLE>Internet and WWW How to Program - Main</TITLE>
17 </HEAD>
18
19 <!-- The <FRAMESET> tag gives the dimensions of your frame -->
20 <FRAMESET COLS = "110,*">
21
22   <!-- The individual FRAME elements specify which pages -->
23   <!-- appear in the given frames -->
24   <FRAME NAME = "nav" SRC = "nav.html">
25   <FRAME NAME = "main" SRC = "main.html">
26
27   <NOFRAMES>
28   <P>This page uses frames, but your browser does not support
29   them.</P>
30   <P>Get Internet Explorer 5 at the
31     <A HREF = "http://www.microsoft.com/">
32     Microsoft Web Site</A></P>
33   </NOFRAMES>
34
35 </FRAMESET>
36 </HTML>
```

Fig. 4.12 Web site using two frames—navigational and content (part 1 of 2).

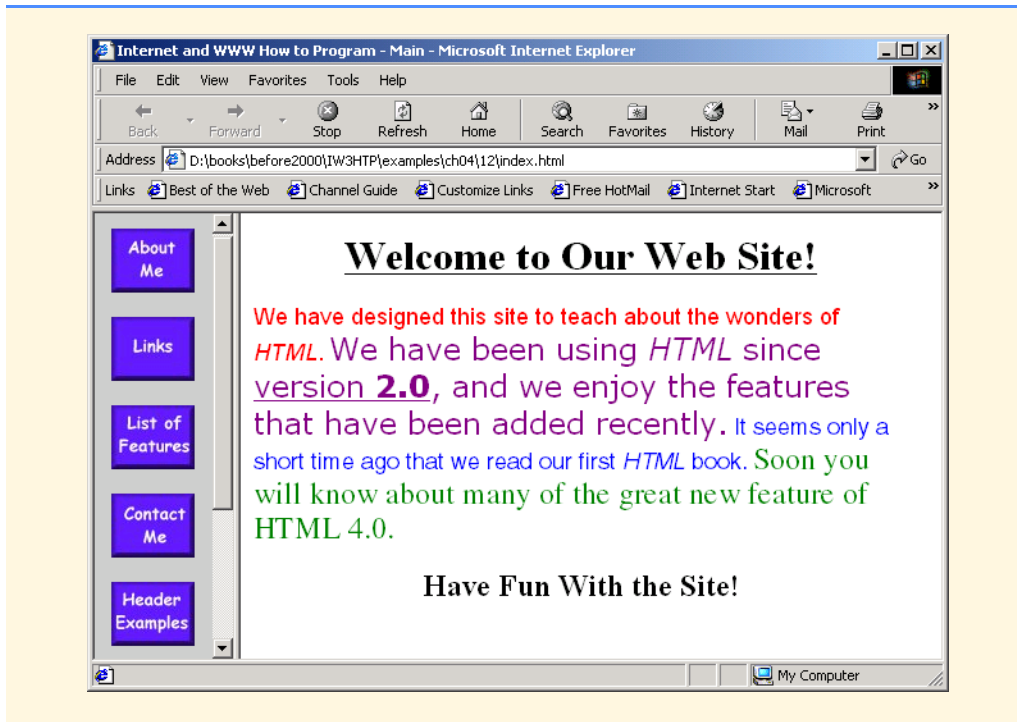


Fig. 4.12 Web site using two frames—navigational and content (part 2 of 2).


```
1 <!DOCTYPE html PUBLIC "-//W3C//DTD HTML 4.0 Frameset//EN">
2 <HTML>
3
4 <!-- Fig. 4.13: index.html -->
5 <!-- HTML Frames II -->
6
7 <HEAD>
8
9 <META NAME = "keywords" CONTENT = "Webpage, design, HTML,
10 tutorial, personal, help, index, form, contact, feedback,
11 list, links, frame, deitel">
12
13 <META NAME = "description" CONTENT = "This Web site will help
14 you learn the basics of HTML and Webpage design through the
15 use of interactive examples and instruction.">
16
17 <FRAMESET COLS = "110,*">
18 <FRAME NAME = "nav" SCROLLING = "no" SRC = "nav.html">
19
20 <!-- Nested Framesets are used to change the formatting -->
21 <!-- and spacing of the frameset as a whole -->
22 <FRAMESET ROWS = "175,*">
23 <FRAME NAME = "picture" SRC = "picture.html" NORESIZE>
24 <FRAME NAME = "main" SRC = "main.html">
25 </FRAMESET>
26
27 <NOFRAMES>
28 <P>This page uses frames, but your browser doesn't
29 support them.</P>
30 <P>Get Internet Explorer 5 at the
31 <A HREF = "http://www.microsoft.com/">Microsoft
32 Web-Site</A></P>
33
34 </NOFRAMES>
35
36 </FRAMESET>
37 </HTML>
```

Fig. 4.13 Framed Web site with a nested frameset (part 1 of 2).

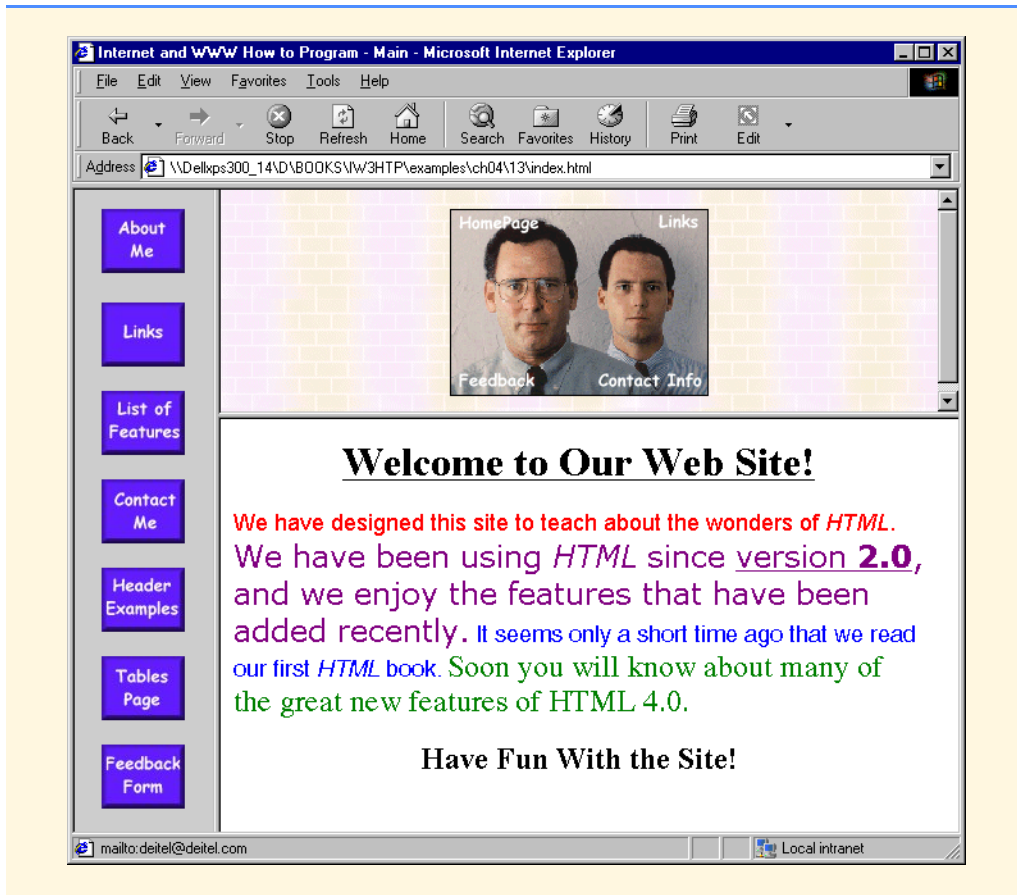


Fig. 4.13 Framed Web site with a nested frameset (part 2 of 2).