

Fig. 6.1 A FrontPage Express window.

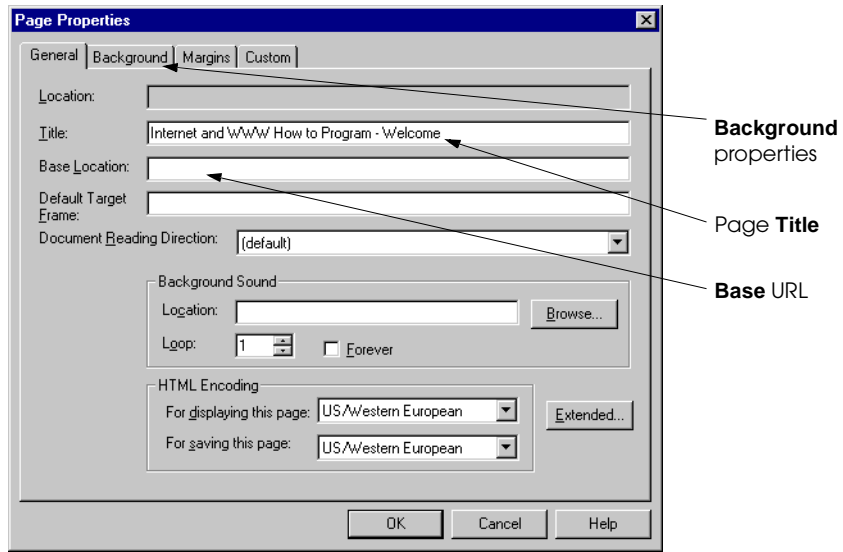


Fig. 6.2 Setting overall Page Properties.

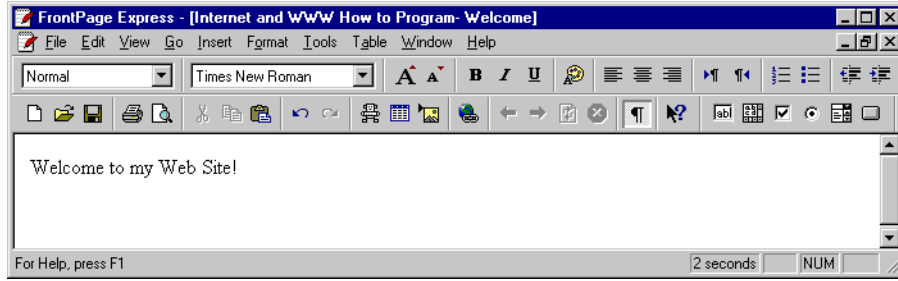
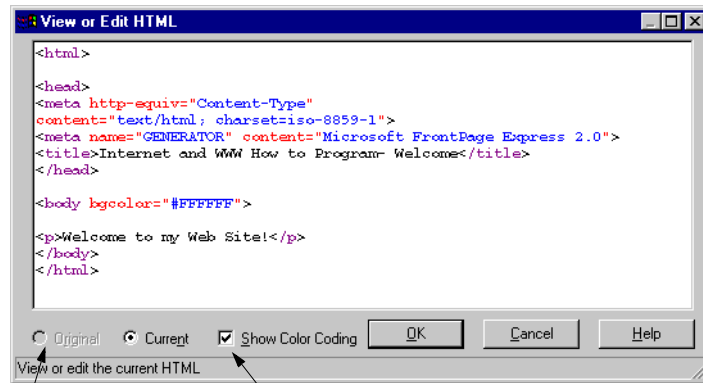


Fig. 6.3 Using FrontPage Express on example of Fig. 3.1.



Version toggle

Color Coding checkbox

Fig. 6.4 Viewing the HTML source code.

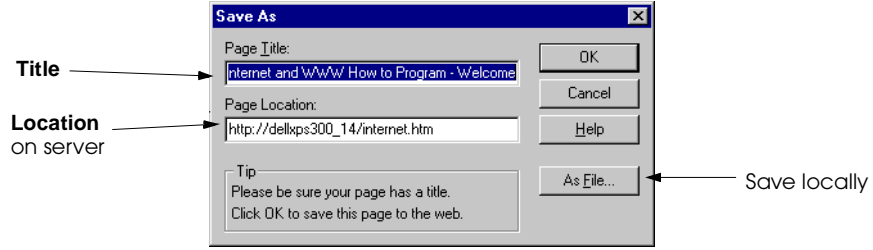


Fig. 6.5 Saving your HTML file.

```
1 <html>
2 <head>
3
4 <meta http-equiv="Content-Type"
5 content="text/html; charset=iso-8859-1">
6 <meta name="GENERATOR" content="Microsoft FrontPage Express 2.0">
7 <title>Untitled Normal Page</title>
8 </head>
9
10 <body bgcolor="#FFFFFF">
11
12 <h1 align="center">Level 1 Header</h1>
13
14 <h2 align="center">Level 2 Header</h2>
15
16 <h3 align="center">Level 3 Header</h3>
17
18 <h4 align="center">Level 4 Header</h4>
19
20 <h5 align="center">Level 5 Header</h5>
21
22 <h6 align="center">Level 6 Header</h6>
23 </body>
24 </html>
```

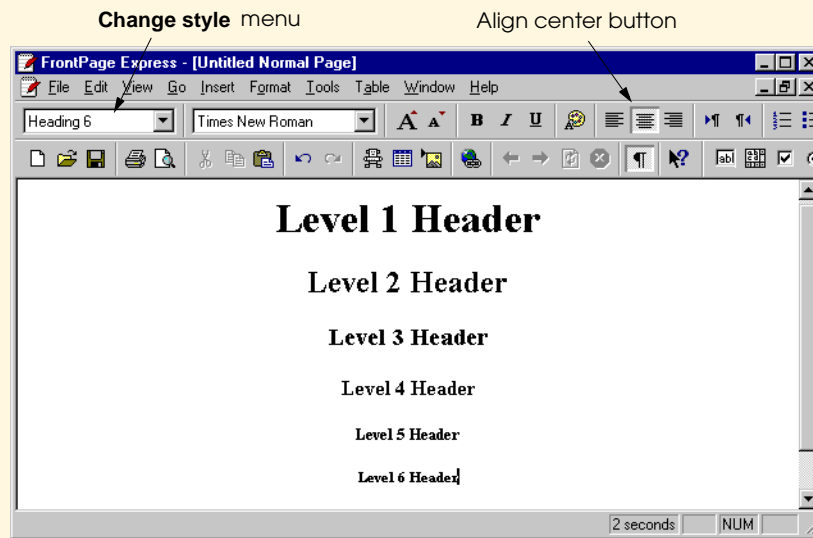


Fig. 6.6 Applying header tags and centering using FrontPage Express.

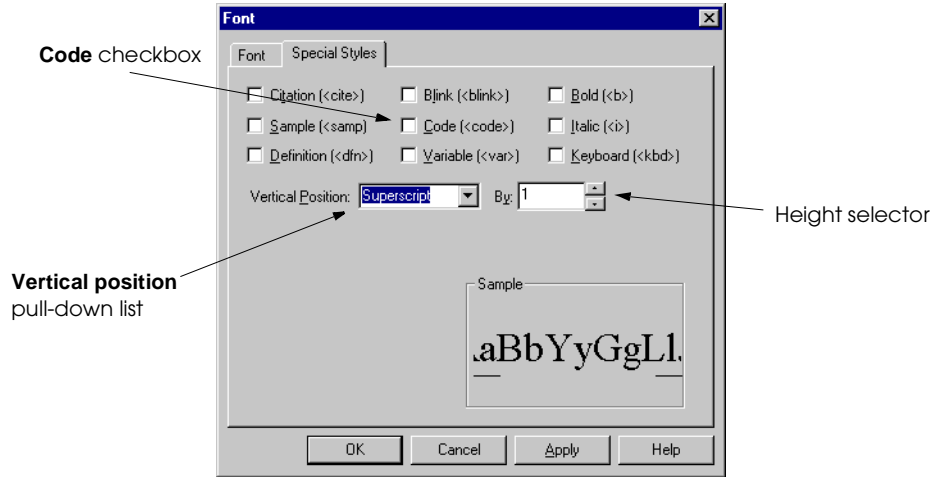


Fig. 6.7 Changing Font settings and adding special styles.

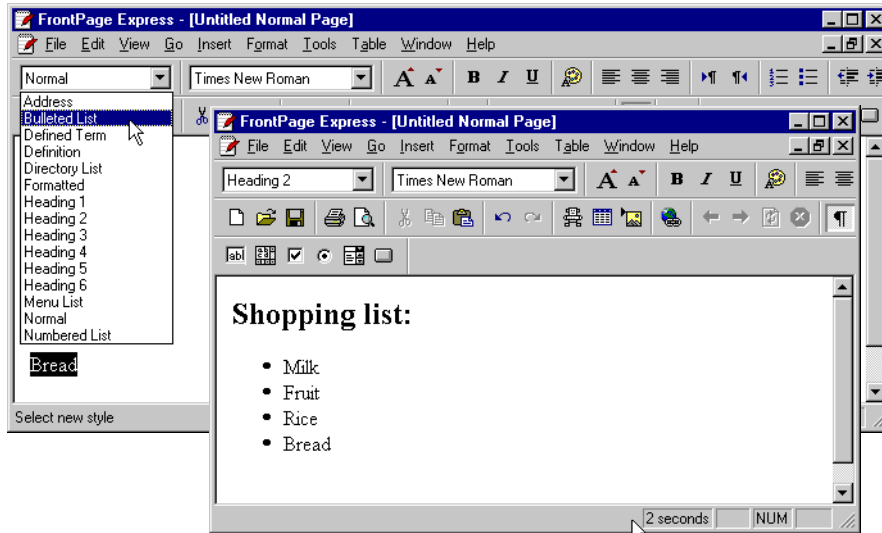


Fig. 6.8 Applying an unordered list and a header to text.


```
1 <dl>
2 <dt><strong>FTP</strong></dt>
3 <dd>File Transfer Protocol</dd>
4 <dt><strong>GIF</strong></dt>
5 <dd>Graphics Interchange Format</dd>
6 <dt><strong>HTML</strong></dt>
7 <dd>HyperText Markup Language</dd>
8 <dt><strong>PNG</strong></dt>
9 <dd>Portable Network Graphics</dd>
10 </dl>
```

Bold (STRONG)

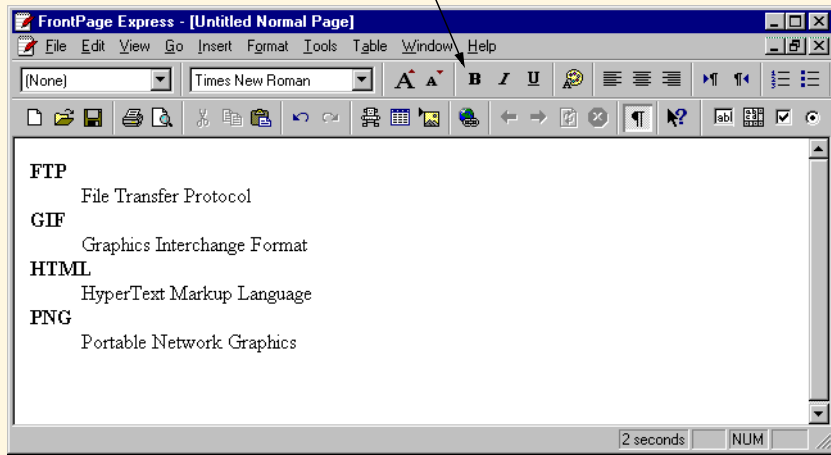


Fig. 6.9 Inserting a definition list using the **Change Style** menu.

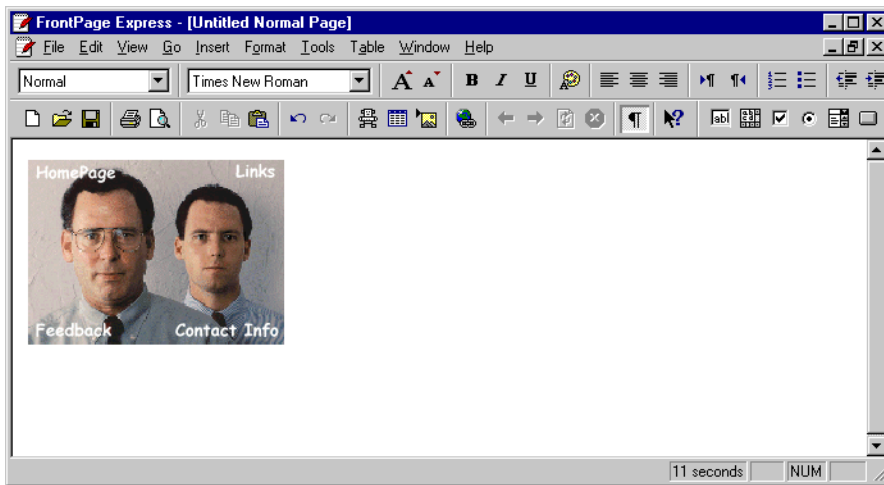


Fig. 6.10 Inserting an image into a Web page.

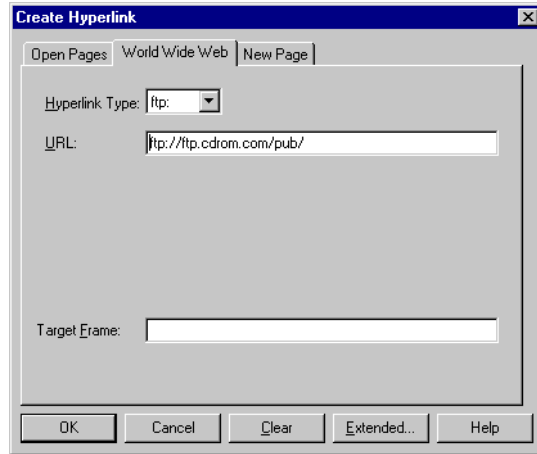


Fig. 6.11 Inserting a Hyperlink in a Web page.

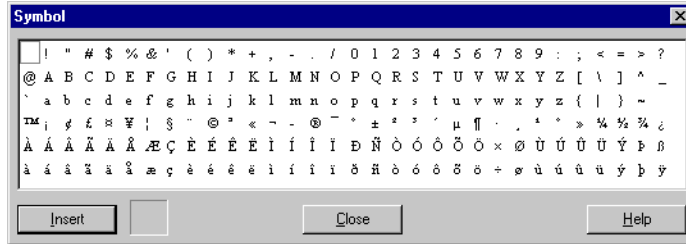
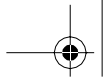
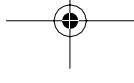


Fig. 6.12 Adding symbols and nonstandard letters.



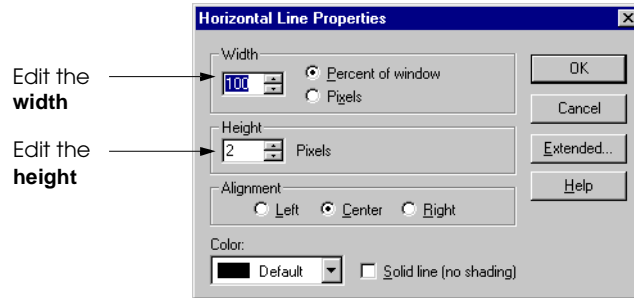


Fig. 6.13 Setting the properties of a **Horizontal Line** element.

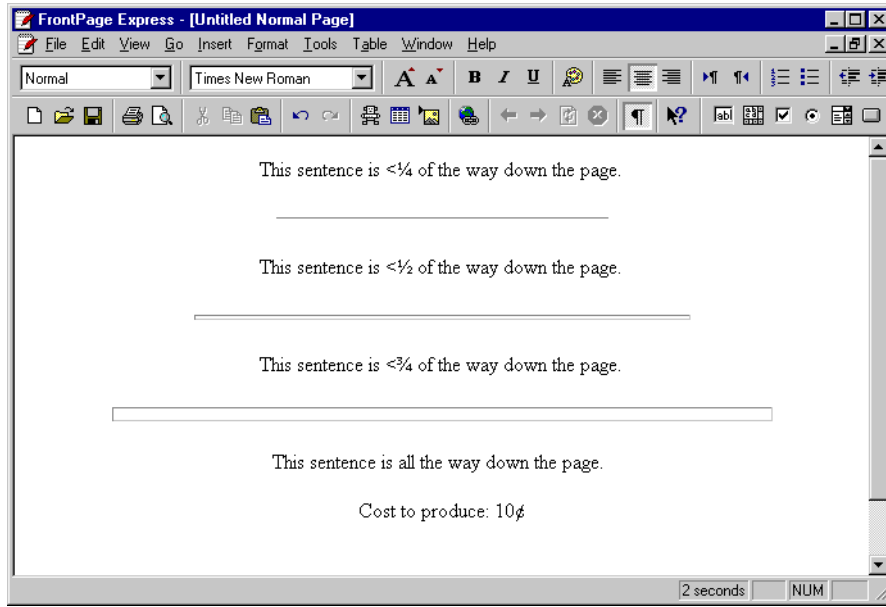


Fig. 6.14 Demonstrating symbols and horizontal lines on one page.

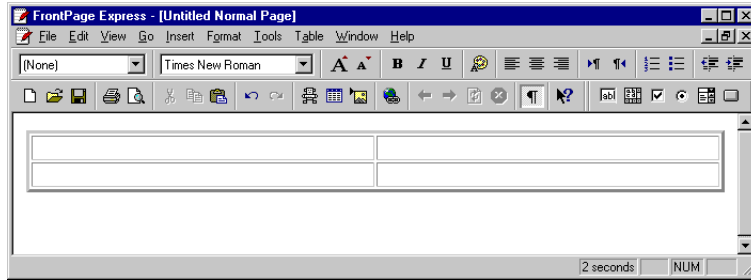


Fig. 6.15 A default table.

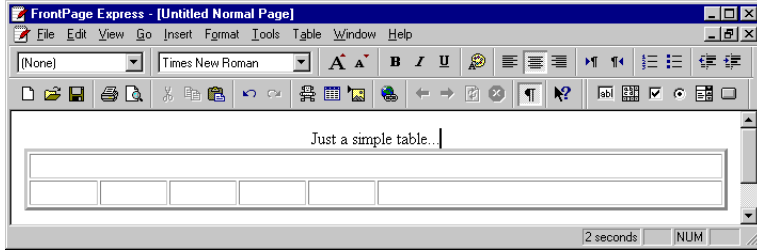


Fig. 6.16 A basic table.

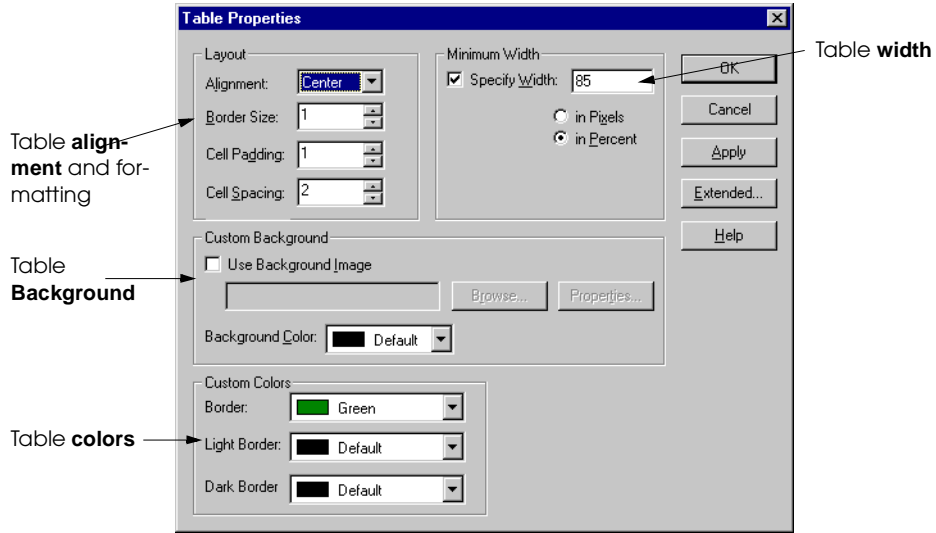


Fig. 6.17 Adjusting table colors and alignment in Table Properties.

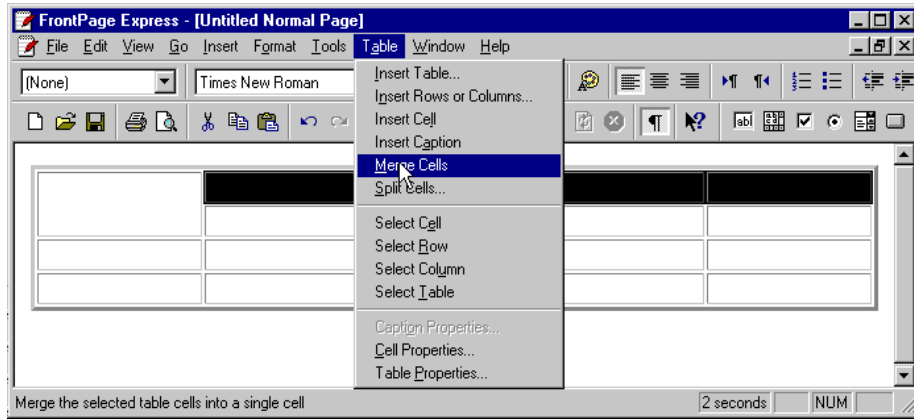


Fig. 6.18 A 4x5 table with the top left cell expanded.

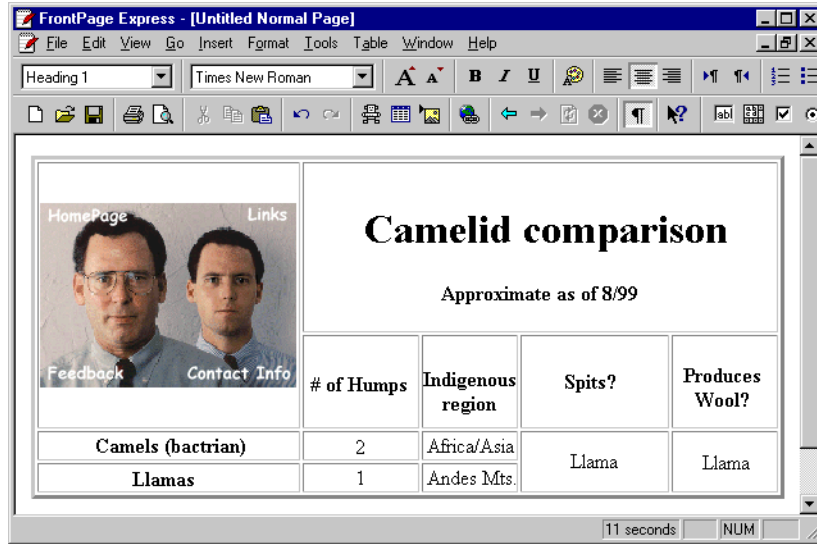


Fig. 6.19 An almost completed table.

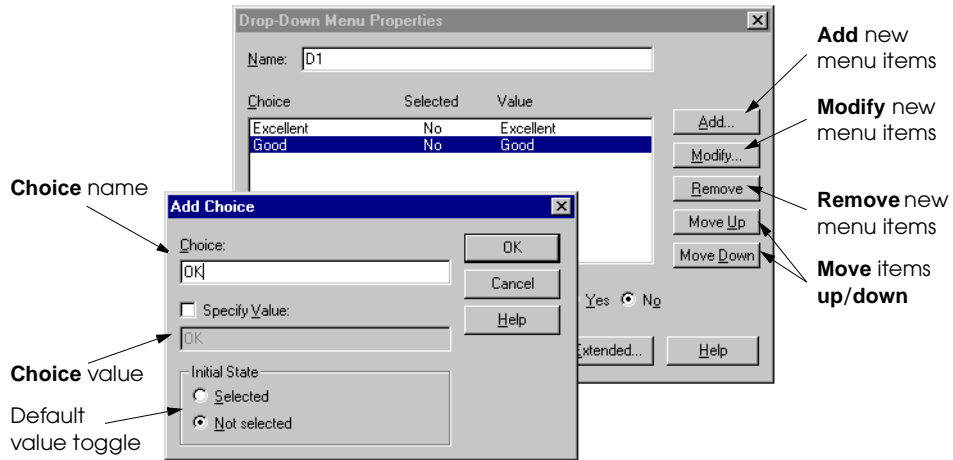


Fig. 6.20 Adding a new item to a drop-down form menu.

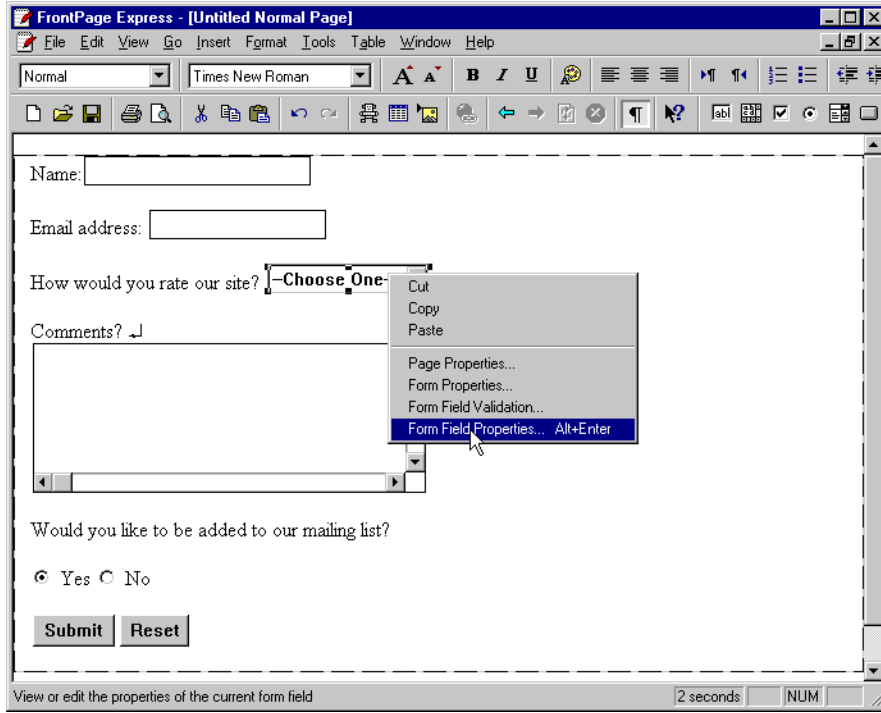


Fig. 6.21 A brief form for user input.

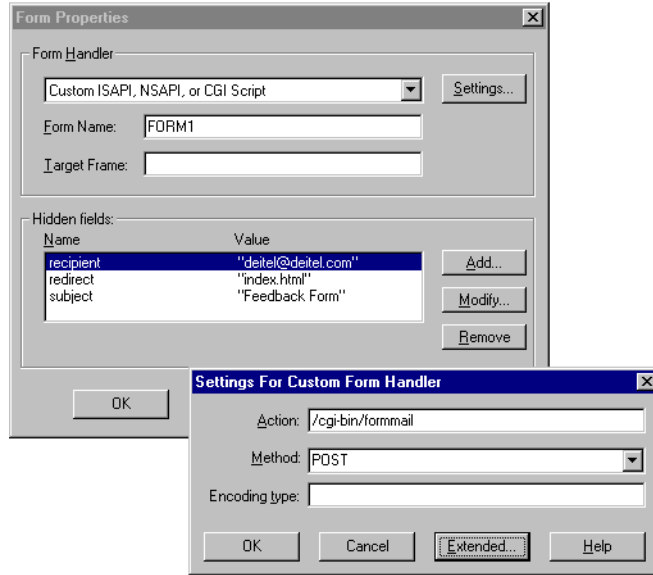


Fig. 6.22 Using the Form Properties dialog box.

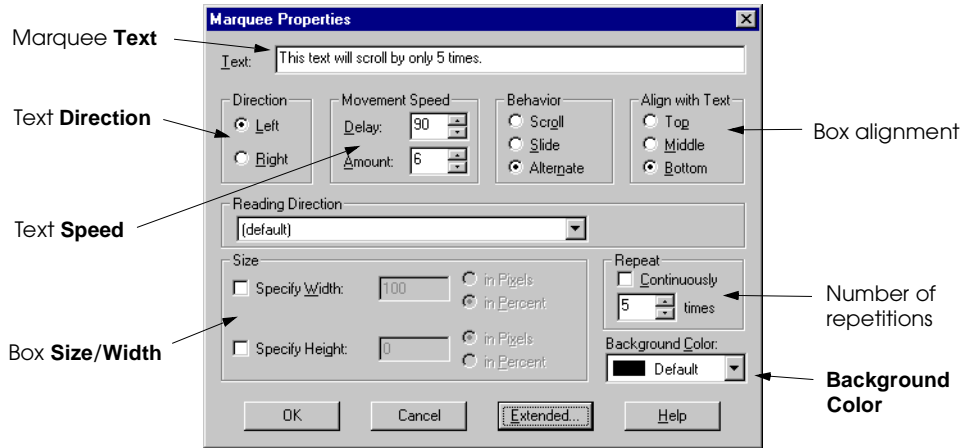


Fig. 6.23 Inserting a MARQUEE element for scrolling Web page text.

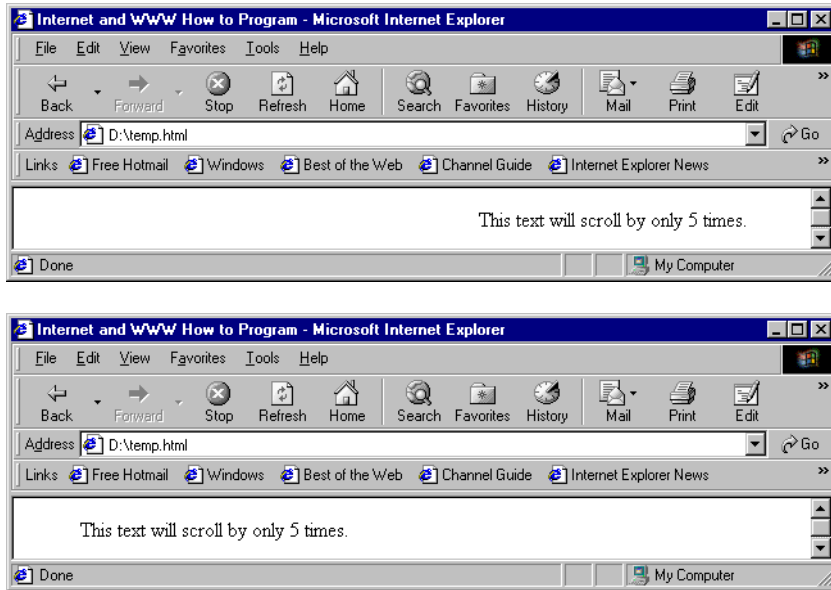


Fig. 6.24 The MARQUEE element in action.

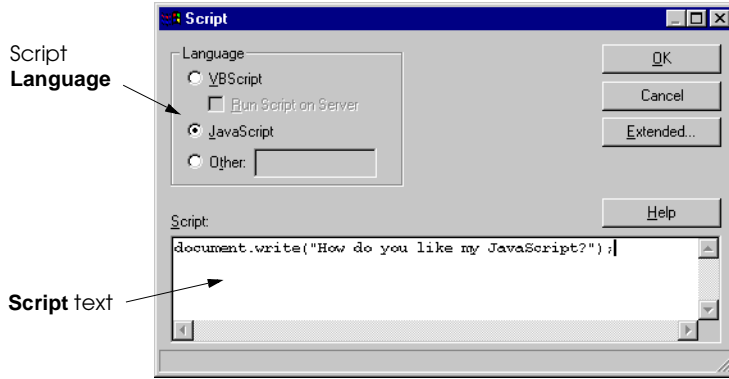


Fig. 6.25 Adding a script to the HTML file.